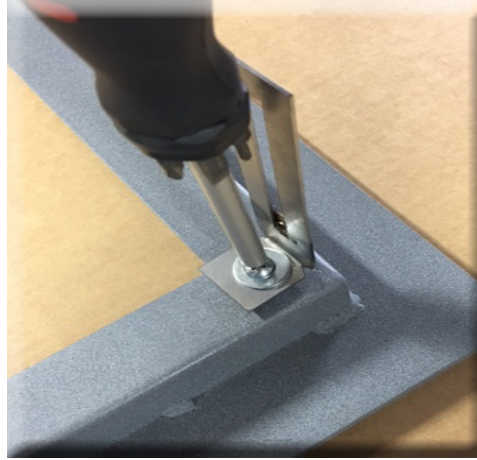


Classic, Black Iron, Luxe, Essential, & Elegant Series Installation Instructions

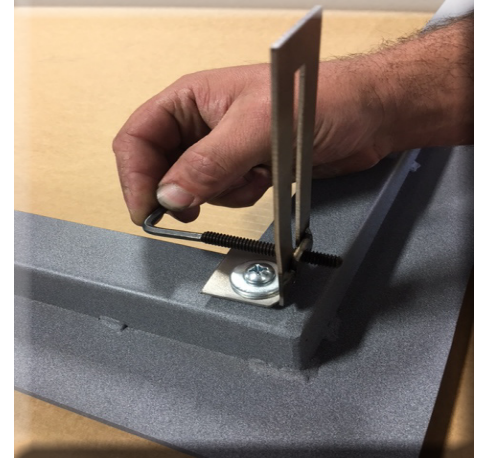


1. Included hardware:

4 Brackets, 2 Lead Anchors, 4 Washers, 4 Screws to attach brackets to frame, 2 Screws to use with lead anchors. Allen wrench & 4 Compression bolts. 2 Self tapping screws to use if mounting to lenthil.



2. Attach mounting brackets on all four corners as shown. Use washer & small screw.



3. Use optional compression bolts if a friction install is desired. If you choose to install with lead anchor lags, skip to next step.



4. Hammer or bend tab to tightly fit to fireplace opening. With a marker or pencil. Mark within slot for the lead anchor placement.

5. Drill hole with a 5/16" into firebrick or 3/8" drill bit. (not provided). Insert lead anchor.



6. Tighten lag bolt (provided) until flange is snug. Adjust as needed to make door fit well on opening face.



7. Self tapping 1/4" screws are provided if mounting to a lenthil bar is desired. Use 15/64" drill bit. (not provided)

Optional. Pack insulation (provided) in back of door to help seal off smoke leakage. (picture not shown).